



# Our energy saving policy



By following these basic principles we can all work together to make a huge difference

Do daily checks for defects on equipment and report any problems straight away

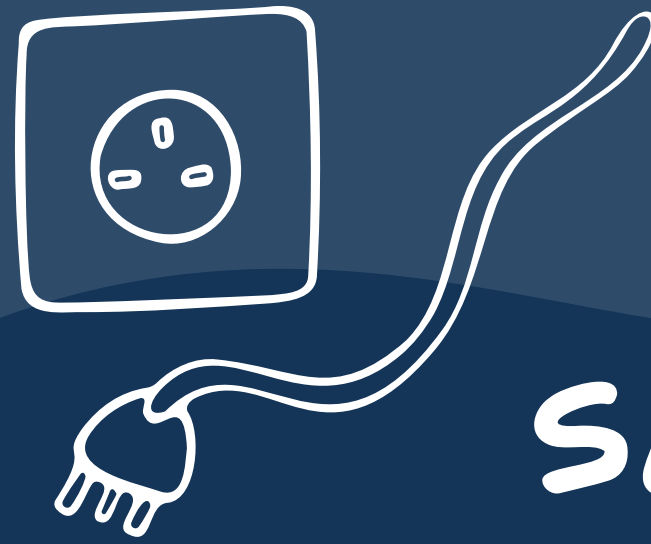
Do not run taps for longer than necessary and ensure they are maintained

Only use the dishwasher if it is full

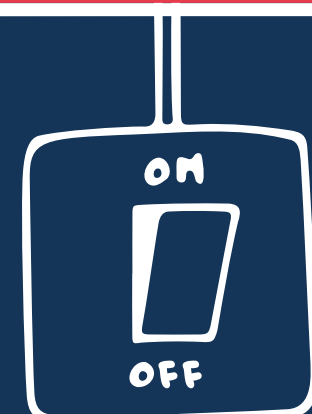
Fill your ovens and steamers to maximise the energy use

Turn off equipment right after it is used

Switch lights off when not required



SAVE ENERGY



SAVE ELECTRICITY